

SLEH220-50W



www.senslights.com
sales@senslights.com

SLEH220-50W



Advanced intelligent solar street light
no wiring no electricity!

Features:

- * Unicast Design , Never Break Up
- * Aluminum body , Never Fade
- * Different easy installation ways
- * Rotateable lamp head 0-160degree

Technology Parameters :

Solar Panel : 50w 18v Poly, 17% efficiency ,

Battery : Lithium Battery 325WH , Lifetime: 1000cycle times

Charging time:6-8hrs (1000w/m²)

Light Source : Bridgelux **COB** LEDs 1pc, 30w 3000-3600LM ,equivalent to 250w filament Lamp; Direct shoot road .Color Temperature : 6000-6500K

Contoller: Timer Control+Light Control+PIR motion sensor
Anti-over discharge ,anti-over charge , anti-short current
Protect Level: IP65

Recommended Lamp pole diameter: 70mm /2.75"

Work Temperature: -20°C-65°C

Height : 6-8 Meters

Recommended distance between the 2 lamp pole : 15-20m, width:6-8m

Working time : Light control automatic. Key light keep full-bright before 5hrs , then 20% bright +PIR until next dawn . Keep working 3-5 nights after fully charged .

Product Material: Aluminum Alloy+Tempered Glass +PC

Products Size : 438MM*880MM



www.senslights.com
sales@senslights.com

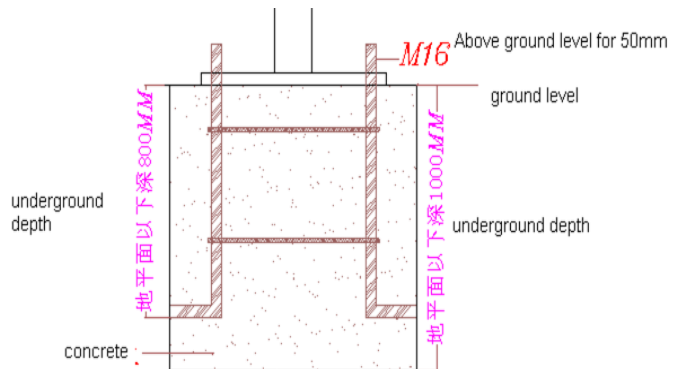
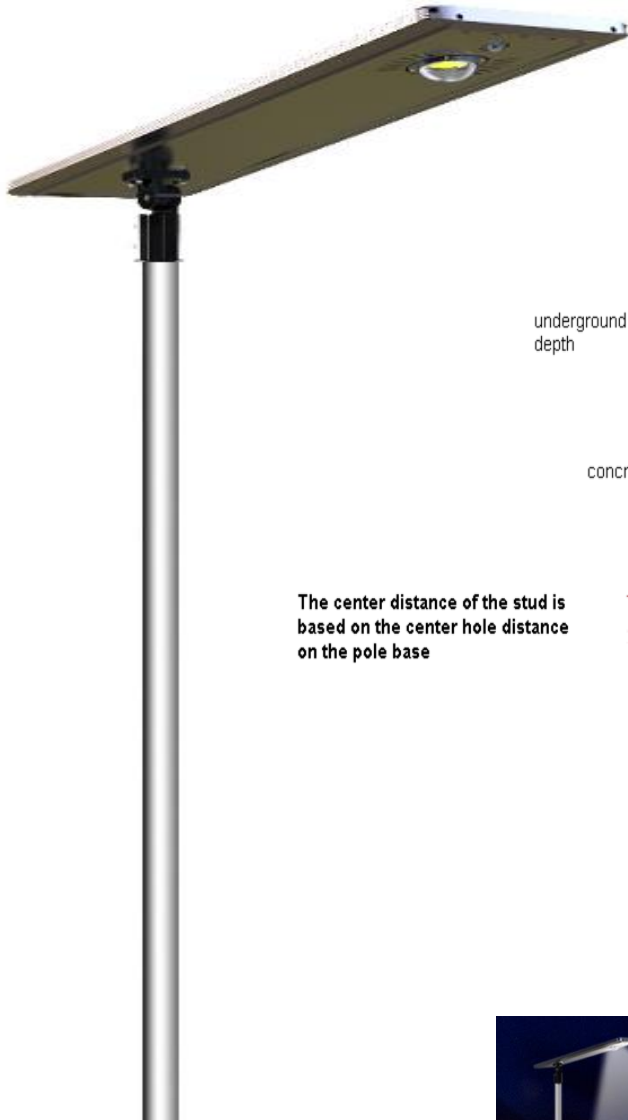
SLEH220-50W

No Wiring No electricity!

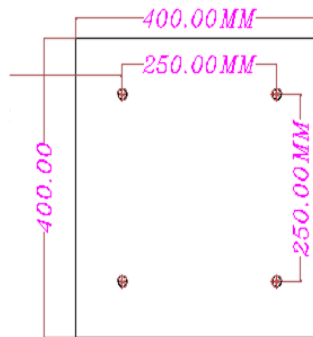


MODERN DESIGN INTEGRATED SOLAR LED STREET LIGHT

Recommended Ground Bamboo Cage Spec.



The center distance of the stud is based on the center hole distance on the pole base



5-8M Installation Height Ground bamboo cage Sepc.
The diagram only for reference ,
final base on the actual
geological environment and
requirements



www.senslights.com
sales@senslights.com

No Wiring No electricity!

modern design integrated solar led street light

Multitasking Corporation test report

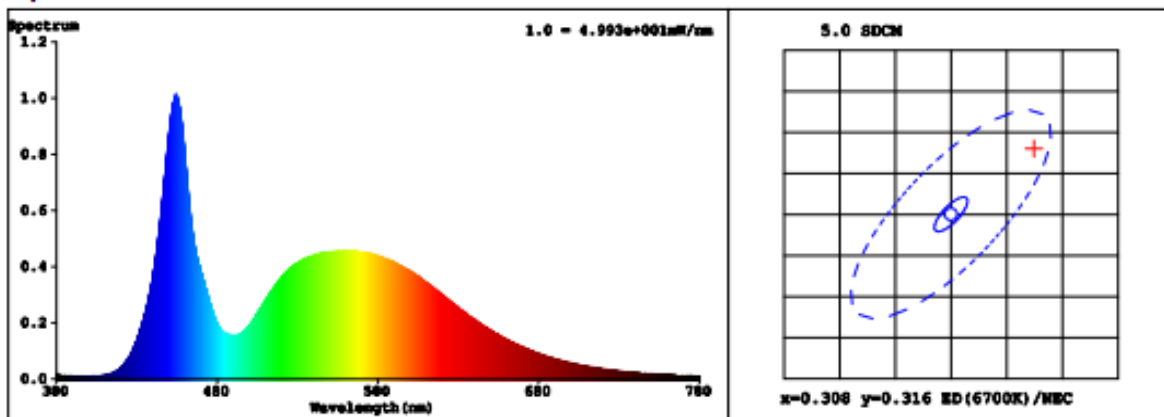
Spectrum Test Report

Sample	:	Date	:	2016-12-01 14:57:37
Specification	:	Sam. Status	:	
Sample No.	:	Instrument	:	HaasSuite(EVERFINE)
Manufacturer	:	Test by	:	DAMIN
		Assessor	:	damin

Test Condition

Temperature	:	25.3Deg	RH	:	65.0%
WL Range	:	380nm-780nm	IP	:	51791 (79%)
Test Mode	:	Fast Test	T	:	347 ms
			Sensitivity	:	High

Spectrum



Spectral Distribution

CIE1931 Chromaticity Diagram

Colorimetric Parameters

Chromaticity Coordinate: $x = 0.3154$ $y = 0.3240$ / $u' = 0.2016$ $v' = 0.4660$ ($duv = -7.85e-04$)

CCT= 6390K Prcp WL: $L_d = 484.7 \text{ nm}$ Purity=6.8%

Peak WL: $L_p = 454 \text{ nm}$ FWHM: $= 21.6 \text{ nm}$ Ratio: R=13.4% G=81.6% B=5.0%

Render Index: $R_a = 79.5$

R1 = 78	R2 = 85	R3 = 85	R4 = 78	R5 = 78	R6 = 76	R7 = 87
R8 = 68	R9 = 3	R10 = 60	R11 = 74	R12 = 48	R13 = 80	R14 = 91
						R15 = 76

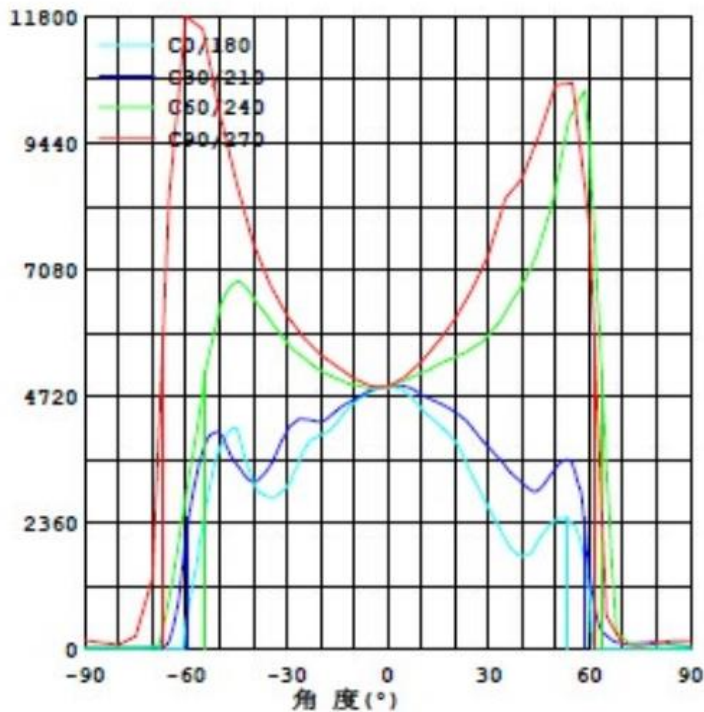
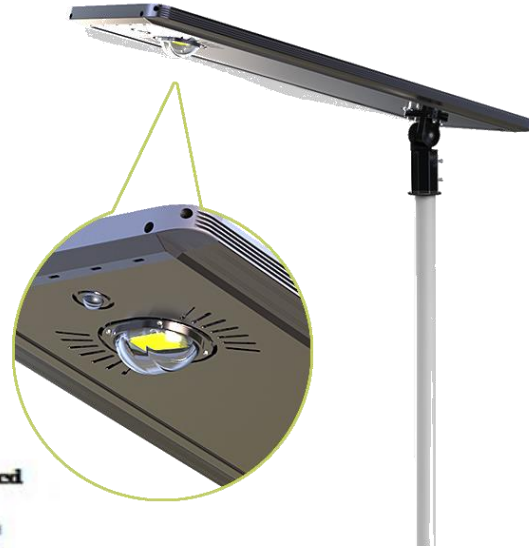
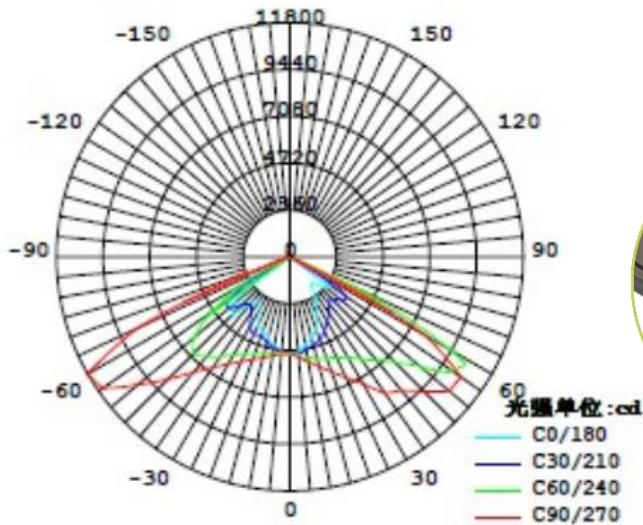
SLEH220-50W

No Wiring No electricity!

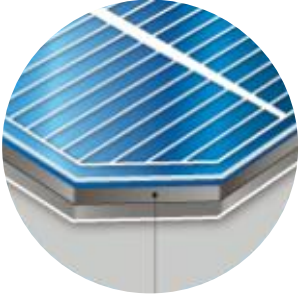


Modern design integrated solar led street light

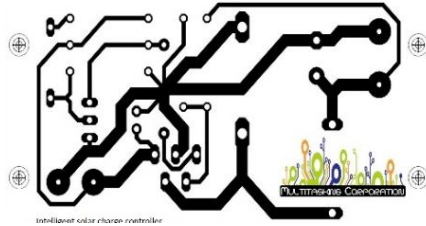
Light Distribution Curve



Quality Certification Multitasking Corporation test report



Multitask Solar Panel



Intelligent Solar controller



SensLights LED Chip



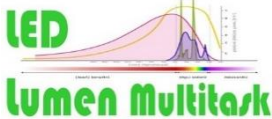
Energy saving rating



Green Energy Products



Green & Eco Friendly Products



LED chip bright and Lumen testing Quality Standard



No Wiring No electricity!



Solar Powered Products

