

SLDY015AF



www.senslights.com
sales@senslights.com

No Wiring No electricity!

High Bright Solar motion Light

Features:

SensLights solar garden lights source chip from Senslights ,golden wire,BSOB wire bond.

Mon crystalline solar panel, we only use grade A solar.
Die casting aluminum, electrostatic spraying for salt spray proof.

Intelligent light control and timer control. The light switch on in the evening and switch off in the morning by detecting the day and night.
The lighting time and power is customizable.

More than 36H autonomy with lithium battery inside .100% safe. No explosion risk. Optional LiFipo battery

Easy installation. No trenching and cabling. Money saver.

Nobody does lighting quite the way SensLights does, which has championed the use of LEDs in everything from domestic bulbs to its versatile Hue smart lighting. Its solar lights are brighter than most rivals and come in various styles such as downward-facing posts, upward-facing lights and more industrial wall-mounters.

This wall light has a big solar panel on top, meaning you get more light for longer from the LED for a good six hours. It's simple to set up and has great build quality. You can also choose a version with a built-in motion sensor. Strong enough to easily see if that's an olive or a beetle in your salad.

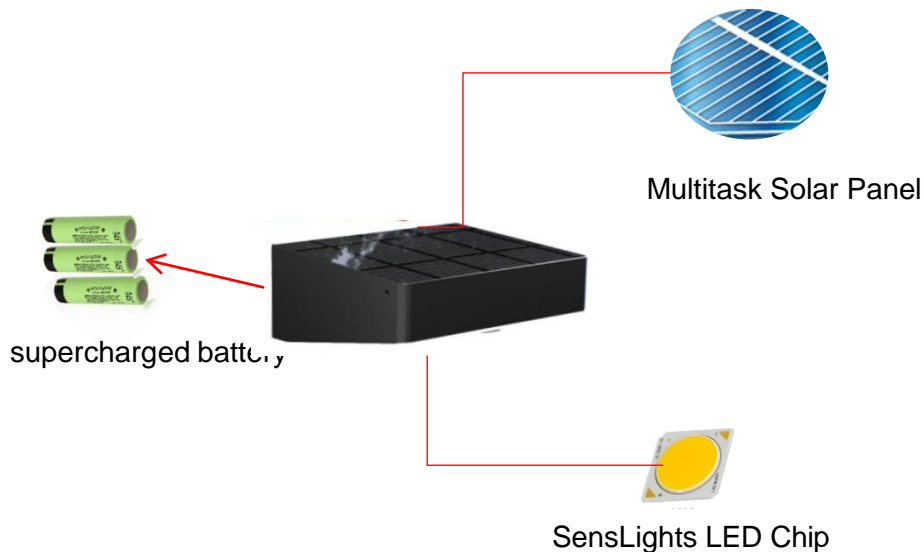


High Bright Solar motion Light

Technology Parameters :

- 1, Solar panel :2.2W
- 2, LED :53pcs ,500lumens (Netural led color : Pure white) ,LED life span:+50000hrs
- 3, Charging Method : Solar power
- 4, Charging time :6-8hrs
- 5, Battery : 2200mah li-ion battery
- 6, Material : PC + aluminum shell
- 7, IP level : 65
- 8, With PIR motion sensor and light sensor
- 9,Working Temperature: -25°C to 65°C

Product size: L155 *W 122 *H61mm



SLDY015AF



No Wiring No electricity!

High Bright Solar motion Light



Features

1. Intelligent Lighting mode
2. 3500mAh Li-ion battery can support the lamp for 3-5 entire nights
3. No need with fussy electricity wire
4. Motion detected to control the Solar Garden Wall Lights with DIM and High brightness .
5. Big solar panel auto-identify day and night .
6. Modern design with aluminum shell for long lifespan.
- 7 .IP65 waterproof and heatproof

Application

Utilized the premium quality crystalline solar cells, environmentally friendly Li-ion battery and high quality LED lights, the Unique Solar Motion LED Light now is able to provide the wide range usage with the pure solar energy:

Garden light, Garden Fence light, Energy light, Decorative light, Outdoor light, Mailbox light, Address light, Wall light, Street light, Emergency light, Park light, Court light, Road light and etc.



www.senslights.com
sales@senslights.com

High Bright Solar motion Light

1. Maintenance / Cleaning

Switch off the luminaire before maintenance and cleaning.

Repairs should only be carried out by qualified persons and using genuine spare parts. Inappropriate repairing could cause significant danger.

WARNING:

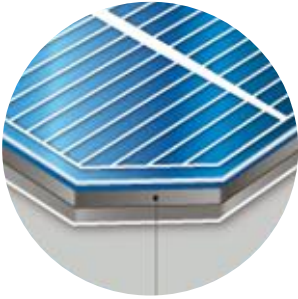
The use of any accessory not specified in this manual may present a risk of personal injury. Cleaning of solar panel in summer / winter Changing rechargeable battery Long-time storage (exposure to light, charge/discharge cycle)

If you need any support please contact: support@senslights.com

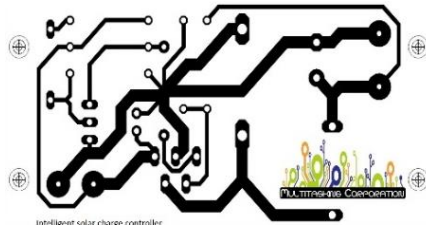
2. Others (Service, Repairing, Guarantee, etc ...)

-Have your product repaired by a qualified person This electric product is in accordance with the relevant safety requirements. Repairs should only be carried out by qualified persons using original spare parts, otherwise this may result in considerable danger to the user. - Please contact the SensLights store which you bought the product for after sale services if any. Or contact: support@senslights.com

Quality Certification Multitasking Corporation test report



Multitask Solar Panel



Intelligent Solar controller



SensLights LED Chip



Energy saving rating



Green Energy Products



Green & Eco Friendly Products



LED chip bright and Lumen testing Quality Standard



No Wiring No electricity!



Solar Powered Products

