

*Multitasking Corporation
The Ultimate Energy Saving Solutions!!!*



About Us

Multitasking Corporation LTD is an end-to-end technology provider. We specialize in energy saving and eco-friendly products. Our high quality electronics components are manufactured by Multitasking Electronic LTD.

Our company is equipped with advanced aluminum die casting machines, pressure machines, digital-controlled bender, welding machines, automatic injection flow lines and other first class facilities & skillful engineers. All our products are selling in European, Middle-east, America, Southeast Asia, Australia and other countries and regions. These years, we're focusing on LED indoor and outdoor lighting, and we have rich experience on these area, especially on LED lighting energy saving solutions with solar and sensors projects.

Manufacturing is at the heart of the group's core capabilities. Decades of experience spans across the generations of lighting. Ongoing investment in people, infrastructure and production capabilities keep our product ranges at the forefront of market requirements.

ENGINEERING

Over 50 Global R&D, mechanical and electronics engineers work across power, control, lamps and luminaires. Managing the ever-changing dynamics of LED technology to maintain compatibility of the DNA elements and deliver world class lighting solutions.

TESTING & COMPLIANCE

Ensuring our products meet the highest quality standards requires world class testing capabilities. Our Ji'an megacentre has been officially approved as a NEMKO qualified laboratory operating alongside in-house photometric centres in Asia, UK, Canada and the USA.



Services



SensLightsexperience is founded on partnerships that offer support through design consultancy, project and programme management as well as state-of-the art products that meet the requirements across a number of key verticals.

International infrastructure, innovative product ranges and specialist expertise enable Aurora to successfully deliver quality tailored solutions to any destination, on time, every time.

We ensure our customers receive the best possible service and support across product, customer service

and key account management. From informative product catalogues to mobile showrooms, we showcase Aurora products in a variety of ways to everyone, from contractors to end-users.

Through our integrated approach, SensLights effectively and efficiently delivers products to our core sectors: Commercial, Industrial, Retail, Hospitality and Residential.

Senslights has grown to become one of lighting's most recognisable and reliable brands, and as we head into the future, we aim to continue to provide the support required that enables our customers to achieve the desired results.

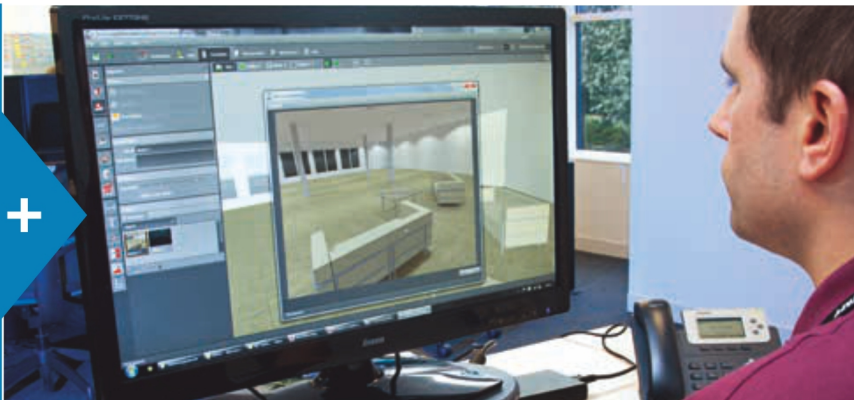
CONSULTATION

Starting with in-depth understanding of client requirements and vision, our turnkey service meets their requirements throughout the entire process.



LIGHTING DESIGN

Utilising the latest software, our experienced team, with a proven track record, successfully designs and produces lighting schemes for a variety of clients.



PROJECT MANAGEMENT

Working with all parties involved in the delivery and installation of lighting. Aurora's team ensures that all programs are consistently delivered on time, to brief.





SALES SUPPORT

Promoting a strong brand is a key benefit for Senslights partners. This is why SensLights invests into its brand and marketing tools every year to be best in class for contractors and end-users. Our trade partners enjoy excellent field sales and marketing support to leverage the return on investment in the SensLights portfolio as much as possible.



CASE STUDY

In Multitasking Corporation with Mr. Seung-heon woo, SensLights has created a distinctive lighting scheme for Multitasking industries Ltd. One, the largest industries in Gyeonggi-do, Korea. The original foyer lighting was derived from ancient, traditional Japanese lanterns and was designed by renowned Japanese architect. The new LED solution comprised of various sizes of custom built LED Panels that delivered energy savings and kept the original spirit of the installation alive.



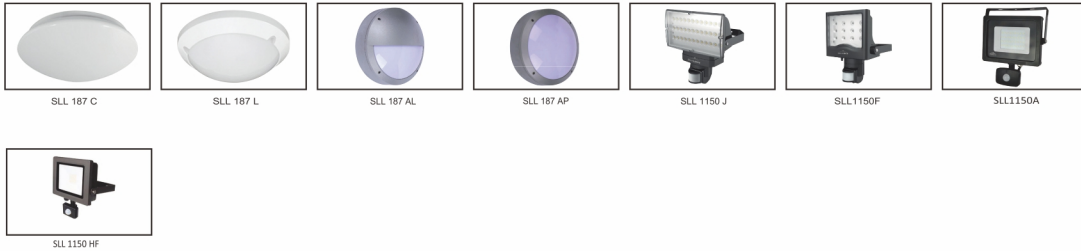
Multitasking Corporation Group Clients



Contents

Light with Sensor

P04-P07



Ceiling Mount Sensor

P09-P13



Wall Mount Sensor

P15-P17



Light Control Switch

P18-P18





Big energy saving and Security Solutions Simple&Reliable State of the Art Technology!!

Why waste electricity while we can help you to save?

Electrical Equipment is "Switched ON" only when necessary!!!

This is achieved by the State Of The Art technology applied in Senslights.

- Sensor monitors movement of objects in the assigned area
- Signals to Switch-On lights automatically

How Senslights can help you to save?

Sensor continuously monitors the movement of any object in the assigned area Sends the signal to, Switch-ON" the light, automatically as soon as the movement of the Object is detected.

Lights get "Switched-Off"1 automatically after the pre-set time delay.

Technology used

Surface-mount technology (SMT) is a method for constructing electronic circuits in which the components (SMC or Surface Mounted Components) are mounted directly onto the surface of printed circuit boards (PCBs). Electronic devices so made are called surface-mount devices or SMDs. In the industry it has largely replaced the through-hole technology construction method of fitting components with wire leads into holes in the circuit board.

An SMT component is usually smaller than its through-hole counterpart because it has either smaller leads or no leads at all. It may have short pins or leads of various styles, flat contacts, and a matrix of solder balls (BGAs) or terminations on the body of the component. This resulted in a wide usage of surface mount technology (SMT) to produce electronic equipment which offers the following advantages:

1. Automatic production of the equipment provides high quality and reliability of the assembled products.
2. Increases / Improves product efficiency
3. Reduction of production time.
4. Significant reduction in the dimensions of PCBs resulting to better cost savings for the end consumer

The Right Technology & Solution

Sensors

Senslights has over two decades of experience in the electrical industry with the latest available technologies to offer the most comprehensive single source for energy saving products. Senslights offers a wide range of energy saving solutions to meet the new energy saving needs on your own building. Our sensors can be used in corridors, halls, rooms, bathrooms, staircase, balcony, gate, classrooms, office, cafeteria, library, etc. Senslights allows house owners to save on electricity while enjoying the lighting when they really need.



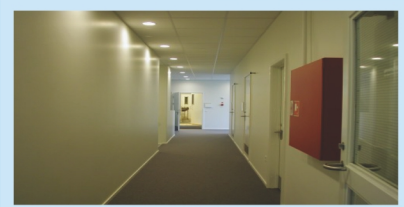
SINGLE-OR MULTI FAMILY HOMES OF STYLE

People can use the Senslights sensors and switches to illuminate their way with passion and reduce their electricity bills.

- Timers ensure outdoor lights are "on" during specific night time periods and turn off automatically.
- Occupancy sensors and timers ensure that lights and fans don't stay on any longer than need to.
- Motion sensor lights driveway and garage as person approaches and times out after the person leaves.

In the Corridor

Sensors make the lights ON only when someone enters into the corridor, and it turns off the lights automatically when there's no movement to save power. It can be used in hotels, apartments and offices



In the Kitchen

In a large kitchen, there may be several banks of lights for illuminating different areas.



In the Bathroom

The washrooms are generally wet due to continuous usage with an occupancy sensor, lights and exhaust fan can be kept down except when needed. It goes off when there is no occupant



Outside the House

Exterior lighting is one of the most basic home security requirements but there is a downside, if left on these lights-can waste a lot of electricity. Installation of lights with sensors at the entrance would be another option for extra convenience and safety. Example: Illuminating the lights when a vehicle or person enters the garage.





FOR EDUCATIONAL INSTITUTIONS

The largest single source of energy consumption in schools and other public buildings is lighting. Senslights offers the best optimized energy saving solution with its light control system, which can be interfaced with other building controls, such as HVAC systems to achieve additional savings.

Some well reputed universities around the world use the occupation sensors to provide the best optimized usage of energy in long corridors, library, labs, lobby, wash rooms and other faculty and student usage areas. The lobby is used for banquets and receptions, as well as a study hall.



HEALTHCARE

Due to the fact that healthcare facilities vary depending on the scope of the facility, lighting control systems installed here must factor in diverse safety. Senslights also offers a full line of touch switches which are easier to operate for the patients. The Senslights in the waiting areas can reduce energy bills significantly.



INDUSTRIAL

Nearly 40 % of the electricity used in a typical warehouse is consumed by the lighting equipment according to a 1999 survey in US Government's Energy Information Administration. That means companies can save an awful lot of money by incorporating Senslights' energy saving lighting controls in their facilities like long stack floors, cafeteria, prototype labs, rest rooms and other visitor and store usage areas.



OTHER APPLICATIONS

Senslights could also be integrated with various other appliances. For example, with the help of multiple sensors, appliances like Air-conditioning, Ventilation systems and various appliances can be controlled intelligently and efficiently.

INSTALLATION & SETTINGS

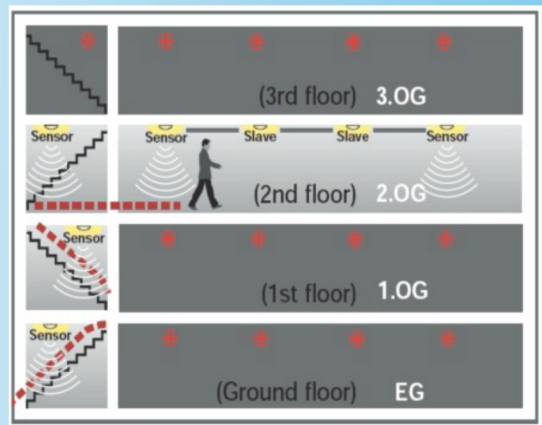
Since Senslights has various models based on the requirement of its clients, it is advisable to choose the model based on your requirement.

For optimal surveillance installation position of the presence detectors should be directly above the workplaces. The Senslights have an almost circular detection area. The areas must therefore overlap slightly to ensure that there are no gaps in the detection. The master to which the load is connected is responsible for monitoring the brightness and the off-delay. The slaves have the task of routing detected movement to the master



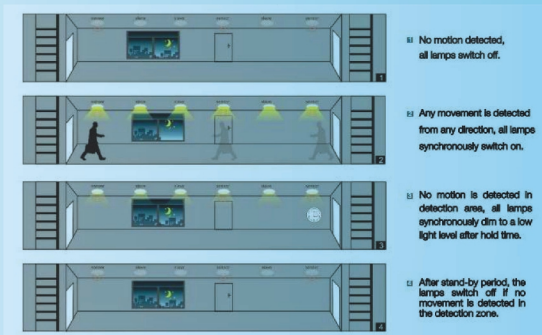
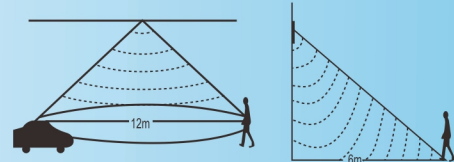
Model Specification SLL 187 C

Detection Range:180°/360°
 Power Source: 220-240V/AC
 HF System:5.8GHz CW radar,ISM band
 Rated Load:24W
 Detection Distance: Wall: 5-15m(adjustable)
 Ceiling:2-8m(radius),adjustable
 HoldTime:10s,90s,3min,10
 Stand-by Period:0s,30s,10min, + ∞ (choice)
 Daylight Sensor:5LUX,15lux,50lux,2000lux(choice)
 Stand-by Dimming level : 10%,20%
 Installing Height: wall: 1.5-3.5m ceiling: 2-4m



Model Specification SLL 187 L

Detection Range:360°
 Power Source: 220-240V/AC
 HF System:5.8GHz CW radar,ISM band
 Rated Load:16W E27
 Detection Distance: Wall: 5-15m(adjustable)
 Ceiling:2-8m(radius),adjustable
 HoldTime:10s,90s,3min,10
 Stand-by Period:0s,30s,10min, + ∞ (choice)
 Daylight Sensor:5LUX,15lux,50lux,2000lux(choice)
 Stand-by Dimming level : 10%,20%
 Installing Height: wall: 1.5-3.5m ceiling: 2-4m

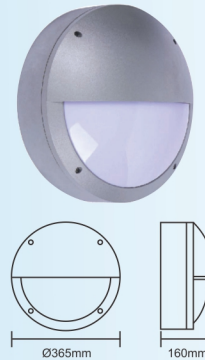




Model Specification SLL 187 AL

Detection Range:180°/360°
 Power Source: 220-240V/AC
 HF System:5.8GHz CW radar,ISM band
 Rated Load:24W
 Detection Distance: Wall: 5-15m(adjustable)
 Ceiling:2-8m(radius),adjustable
 HoldTime:10s,90s,3min,10
 Stand-by Period:0s,30s,10min, + ∞ (choice)
 Daylight Sensor:5LUX, 15lux,50lux,2000lux(choice)
 Stand-by Dimming level : 10%,20%
 Installing Height: wall: 1.5-3.5m ceiling: 2-4m

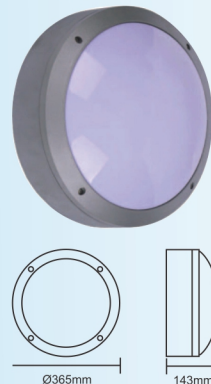
SLL 187 AL



Model Specification SLL 187 AP

Detection Range:180°/360°
 Power Source: 220-240V/AC
 HF System:5.8GHz CW radar,ISM band
 Rated Load:24W
 Detection Distance: Wall: 5-15m(adjustable)
 Ceiling:2-8m(radius),adjustable
 HoldTime:10s,90s,3min,10
 Stand-by Period:0s,30s,10min, + ∞ (choice)
 Daylight Sensor:5LUX, 15lux,50lux,2000lux(choice)
 Stand-by Dimming level : 10%,20%
 Installing Height: wall: 1.5-3.5m ceiling: 2-4m

SLL 187 AP

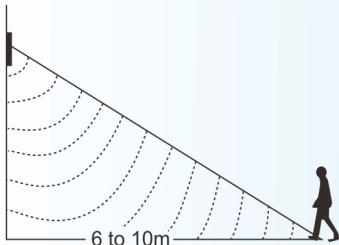
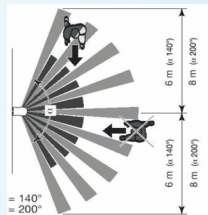
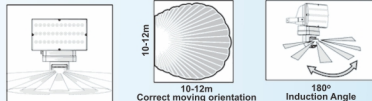




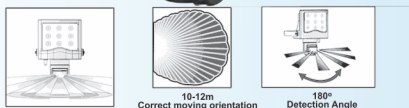
SLL 1150 J



SENSOR INFORMATION



SLL1150F



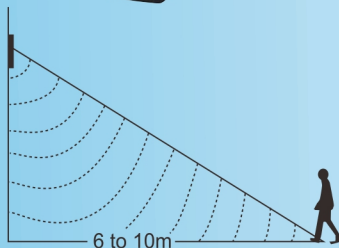
Model Specification SLL1150 J

Power source:220~240V/AC
 Power frequency:50Hz
 Time setting:8sec~7min±2min
 Ambient light:<3LUX~2000LUX(adjustable)
 Detection angle:180°
 Detection range:10~12mmax (24°C)
 Power consumption:0.45W(static 0.1W)
 LED quantity:12PCS
 Single LED load:1~3W
 ColorTemperature:6200K—6700K(adjustable)
 Working temperature:-10~40°C
 luminous flux: 824.76lm
 Installation height:>1.8m~3.5m
 Power consumption:20W
 IP:54

Model Specification SLL1150F

Power source:220~240V/AC
 Power frequency:50Hz
 Time setting:8sec~7min±2min
 Ambient light:<3LUX~2000LUX(adjustable)
 Detection angle:180°
 Detection range:10~12mmax (24°C)
 Power consumption:0.45W(static 0.1W)
 LED quantity:12PCS
 Single LED load:1~3W
 ColorTemperature:6200K—6700K(adjustable)
 Working temperature:-10~40°C
 luminous flux: 824.76lm
 Installation height:>1.8m~3.5m
 Power consumption:20W
 IP:54

SLL1150A

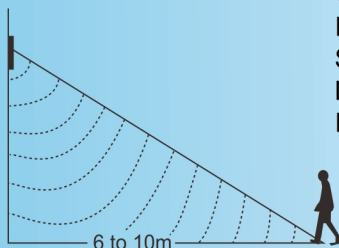


Model Specification	SLL1150A
---------------------	----------

Power source: 220-240VAC
 Power frequency: 50Hz
 Rated load: 20w Max.
 Time setting: 8s-9min (adjustable)
 Light-control: <10LUX-> 300LUX(Adjustment)
 Detection range: 2-10m Max(24°C)
 Detection angle: 120°
 Working temperature: -10°C~+40°C
 Working humidity: <93%RH
 Installation height: 1.8m~2.5m
 Standby power : <0.5W
 IP: 65



SLL 1150 HF



Model Specification	SLL1150 HF
---------------------	------------

Power source: 220-240VAC
 Power frequency: 50Hz
 Rated load: 50w Max.
 Time setting: 8s-9min (adjustable)
 Light-control: <10LUX-> 300LUX(Adjustment)
 Detection range: 2-10m Max(24°C)
 Detection angle: 120°
 Working temperature: -10°C~+40°C
 Working humidity: <93%RH
 Installation height: 1.8m~2.5m
 Standby power : <0.5W
 Luminous flux: 4600lm
 IP: 65



MOST ADVANCED TECHNOLOGY

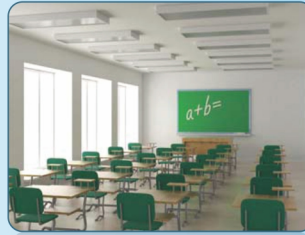
SensLights Passive PIR sensor are widely applied in different fields. These sensors are popular among customers due to the stable technical performance.

Working principle & features of passive PIR sensors: Human body has stable temperature, 37 degree C. Therefore they can send out infrared ray with passive wave length about 10 UM. Passive PIR infrared probes work independently by detecting this 10 UM infrared waves created by human body, strengthened by Fresnel lens and then focus on the inductive source. Inducted Source break the charge while receiving the changing human infrared radiation temperature, using pyro electric components. Follow up circuit can create alarm signal after being detected.

SensLights microwave sensors are still the most advanced method used to detect motion objects. Sensor uses radar waves to detect the speed of a motion object based on the theory of Doppler Effect. This is a theory about the physical phenomenon discovered by an Austrian physicist in the nineteenth Century. Once radio wave in the travel process encounters an object, it will be reflected and the frequency and amplitude of its reflected wave will change in accordance with the moving state of the object. If the object is immobile frequency of the reflected wave will not change. However if the object moves towards the direction of radio wave, the reflected wave will be compressed, and therefore the frequency of the wave will increase. Conversely if the object moves to the opposite direction of a radio wave, frequency of the reflected wave will decrease.

Applications

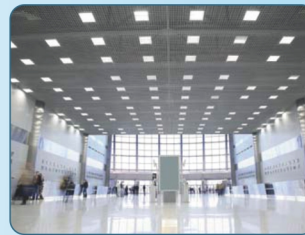
SensLights sensors can be used everywhere to help you save energy and save money. Typical applications are shown below:



A. Classrooms or open offices
Requires: Ceiling mount or wall switch
Microwave / vacancy sensors



B. Public areas (hallways, lobbies, etc.)
Requires: ceiling mount or wall switch microwave
Microwave / vacancy sensors



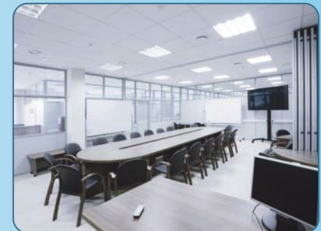
C. High bay applications
Requires: High bay Microwave sensor



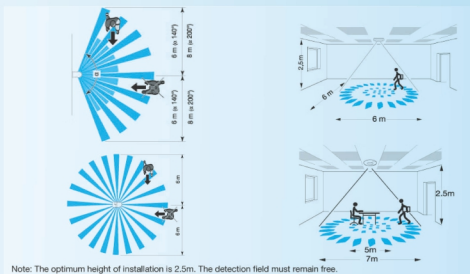
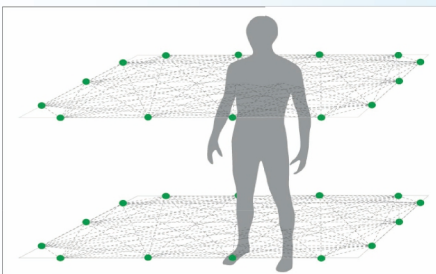
D. Car Parking or Garages
Requires: Microwave sensor



E. Restrooms
Requires: Dual tech ceiling mount Microwave
/ PIR sensor or wall switch sensors



F. Conference rooms
Requires: Ceiling mount Microwave / PIR sensor
or wall switch vacancy sensors



Note: The optimum height of installation is 2.5m. The detection field must remain free.





SLL 1222 B

SPECIFACATION SLL1222B

Material:PC(UV proof)
 Power source: 220-240VAC
 Power frequency: 60 /50Hz
 Rated load: 800W Max.tungsten
 400W Max.fluorescent
 Time setting: (8±3)S-(7±2)Min (adjustable)
 Light-control: <10LUX~2000LUX (adjustable)
 Detection range: 1-10m Max (adjustable)
 Detection angle: 360° (High speed detector)
 Installation height: 2.5m~3.5m
 Working temperature: -10~+40°C
 Detection motion speed: 0.6~1.5m/s
 Working humidity: <93%RH
 Standby power: 0.45W(static 0.1W)



SLL 1229 B

SPECIFACATION SLL1229B

Material:PC(UV proof)
 Power source: 220V/AC-240V/AC
 100V/AC-130V/AC
 Power frequency: 50/60Hz
 Ambient light: 10LUX~2000LUX(adjustable)
 Detecting distance : 3-10m (adjustable)
 Rated load : 1200W Max.tungsten (220-240V/AC)
 300W Max.fluorescent (220-240V/AC)
 600W Max.tungsten (100-130V/AC)
 150W Max.fluorescent (100-130V/AC)
 Time setting: 10sec~12min(adjustable)
 Detection angle: 360° (High speed detector)
 Working temperature: -10~+40°C
 Workinghumidity:<95%RH
 Installation height: 2.5~3.5m
 power consumption: working 0.45W (static 0.1W)
 sense motion speed: 0.6~1.5m/s



SLL 1225 B

SPECIFACATION SLL1225

Material:PC(UV proof)
 Power source: 220-240VAC Power frequency:
 60 / 50Hz Rated load: 1200W Max.tungsten
 300W Max.fluorescent
 Time setting: (8±3)S-(7±2)Min (adjustable)
 Light-control: <10LUX~2000LUX (adjustable)
 Detection range: 1-4m Max (radii.) (adjustable)
 Detection angle: 360°
 Installation height: 2.5m~3.5m
 Working temperature: -10~+40°C
 Detection motion speed: 0.6~1.5m/s
 Working humidity: <93%RH
 Standby power: 0.45W(static 0.1W)



SLL 1227 J

SPECIFACATION SLL1227J

Material:PC(UV proof)
 Detection Range:360°
 Power Source: 110-130V/AC 220-240V/AC
 Power Frequency: 50/60Hz
 HF System:5.8GHz CW radar,ISM band
 Transmission Power:<0.2mW
 Rated Load:Max. 3000W(220-240V/AC)(incandescent lamp)
 400W(110-130V/AC)(energy-saving lamp)
 800W(220-240V/AC) (energy-saving lamp)
 Detection Distance: 18m adjustable
 Time Delay:10sec±3sec to 30min±1min(adjustable)
 Ambient Light :<3-2000LUX(adjustable)
 Installation Height: 1.5-3.5m
 Power Consumption:approx.0.9W



SLL 1229 M

SPECIFACATION SLL1229M

Material:PC(UV proof)
 Detection Range:360°
 Power Source: 110-130V/AC 220-240V/AC
 Power Frequency: 50/60Hz
 HF System:5.8GHz CW radar,ISM band
 Transmission Power:<0.2mW
 Rated Load:Max.1200W(220-240V/AC)(incandescent lamp)
 300W(110-130V/AC)(energy-saving lamp)
 600W(220-240V/AC) (energy-saving lamp)
 Detection Distance: 1-8m(radius), adjustable
 Time Delay:10sec±3sec to 12min±1min(adjustable)
 Working temperature: -10~+40°C
 Ambient Light :<3-2000LUX(adjustable)
 Installation Height: 1.5-3.5m
 Power Consumption:approx.0.9W



SLL 1228 B

SPECIFACATION SLL1228B

Material:PC(UV proof)
 Power source: 220V/AC-240V/AC
 100V/AC-130V/AC
 Power frequency: 50/60Hz
 Ambient light: 10LUX~2000LUX(adjustable)
 Detecting distance : 3-10m (adjustable)
 Rated load : 1200W Max.tungsten (220-240V/AC)
 300W Max.fluorescent (220-240V/AC)
 600W Max.tungsten (100-130V/AC)
 Time setting: 10sec~12min(adjustable)
 Detection angle: 360° (High speed detector)
 Workinghumidity:<95%RH
 power consumption: working 0.45W (static 0.1W)
 sense motion speed: 0.6~1.5m/s

SPECIFACATION SLL1221M

Material:PC(UV proof)
 Detection Range:180° / 360° (High speed detector)
 Power Source: 220-240V/AC
 Power Frequency: 50Hz
 HF System:5.8GHz CW radar,ISM band
 Transmission Power:<0.2mW
 Rated Load:Max.1200W(220-240V/AC)(incandescent lamp)
 300W(220-240V/AC) (energy-saving lamp)
 Detection Distance: 1-12m adjustable
 Time Delay:10sec±3sec to 12min±1min(adjustable)
 Ambient Light : <3-2000LUX(adjustable)
 Installation Height: 1.2-2.3m
 Power Consumption:approx.0.9W



SLL 1221 M

SPECIFACATION SLL1222M

Material:PC(UV proof)
 Detection Range: 360° (High speed detector)
 Power Source: 220-240V/AC
 Power Frequency: 50Hz
 HF System:5.8GHz CW radar,ISM band
 Transmission Power:<0.2mW
 Rated Load:Max.1200W(220-240V/AC)(incandescent lamp)
 300W(220-240V/AC) (energy-saving lamp)
 Detection Distance: 1-12m adjustable
 Time Delay:10sec±3sec to 12min±1min(adjustable)
 Ambient Light : <3-2000LUX(adjustable)
 Installation Height: 1.2-2.3m
 Power Consumption:approx.0.9W



SLL 1222 M

SPECIFACATION SLL1230DM

Material:PC(UV proof)
 Detection Range: 180°/360° (High speed detector)
 Power Source: 220-240V/AC
 HF System:5.8GHz CW radar,ISM band
 Rated Load:Max.:22-40V/DC 600mA
 Detection Range:50%,100%(choice)
 Detection Distance: ceiling:2-8m (radius),adjustable
 Hold Time:10s,90s,3min,10min(choice)
 Stand-by Period: 0s,30s,10min, +∞,0(choice)
 Stand-by Dimming level:10%,20%
 Daylight Sensor:5Lux,15lux,50Lux,2000Lux(choice)



SLL 1230 DM



SLL 1326 B

SPECIFACATION SLL1326B

Material:PC(UV proof)
 Detection Range: 360°
 Power Source: 110-130V/AC 220-240V/AC
 Power Frequency: 50/60Hz
 Rated Load:Max.1200W (220-240V/AC)(incandescent lamp)
 300W(220-240V/AC)(energy-saving lamp)
 Detection Distance:max.6m(<24°C)
 Time Delay:10sec± 3sec to 15min±2min(adjustable)
 Ambient Light: <3-2000LUX(adjustable)
 Detection Motion Speed: 0.6-1.5m/s
 Installation Height: 2.2-4m



SLL 1224J

SPECIFACATION SLL 1224J

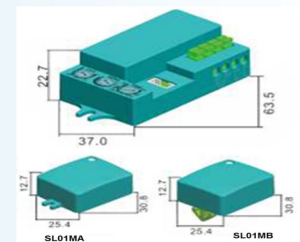
Material:PC(UV proof)
 Detection Range: 360°
 Power Source: 110-130V/AC 220-240V/AC
 Power Frequency: 50/60Hz
 Rated Load:Max.800W (110-130V/AC)(incandescent lamp)
 1200W (220-240V/AC)(incandescent lamp)
 300W(220-240V/AC)(energy-saving lamp)
 Detection Distance:max.6m(<24°C)
 Time Delay:10sec± 3sec to 15min±2min(adjustable)
 Ambient Light: <3-2000LUX(adjustable)
 Detection Motion Speed: 0.6-1.5m/s
 Installation Height: 2.2-4m



SLL PD12

SPECIFACATION SLL PD12

Material:PC(UV proof)
 Detection Range:360°
 Power Source: 220-240V/AC
 Power Frequency: 50/60Hz
 HF System:5.8GHz CW radar,ISM band
 Rated Load:Max. 1200W
 300W
 Detection Distance: 5 ~ 8 m adjustable
 Time Delay:10sec~ 8min(adjustable)
 Ambient Light : <3-2000LUX(adjustable)
 Installation Height: 1.5-3.5m





SLL 1227PW

SPECIFACATION SLL1227PW

Material:PC(UV proof)
Occupation Sensor , Infrared Presence
Detection Range:360°(High speed detector)
Power Source: 110-130V/AC 220-240V/AC
Power Frequency: 50/60Hz
Temperature Microwave /Infrared
Transmission Power:<0.2mW
Rated Load:Max. 1800W(220-240V/AC)(incandescent lamp)
500W(110-130V/AC)(Fluorescent lamp)
900W(220-240V/AC) (energy-saving lamp)
Detection Distance: 18m adjustable
Time Delay:10sec±3sec to 30min±1min(adjustable)
Ambient Light : <3-2000LUX(adjustable)
Installation Height: 1.5-3.5m
Power Consumption:approx.0.9W



SLL 1226 F

SPECIFACATION SLL1226F

Material:PC(UV proof)
Occupation Sensor , Infrared Presence
Detection Range: 360°(High speed detector)
Power Source: 110-130V/AC 220-240V/AC
Power Frequency: 50/60Hz
Rated Load: Max.1000W (110-130V/AC)(incandescent lamp)
2000W (220-240V/AC)(incandescent lamp)
500W(110-130V/AC)(energy-saving lamp)
1000W(220-240V/AC)(energy-saving lamp)
Detection Distance: max.20m(<24°C)
Time Delay:10sec±3sec to 30min±2min(adjustable)
Ambient Light :<3-2000LUX(adjustable)
Installation Height: 2.2-6m
Power Consumption:approx.0.9W

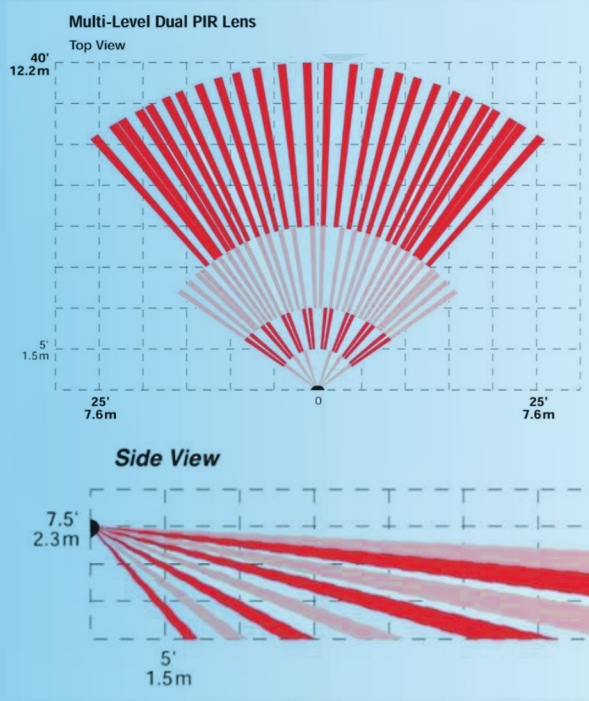
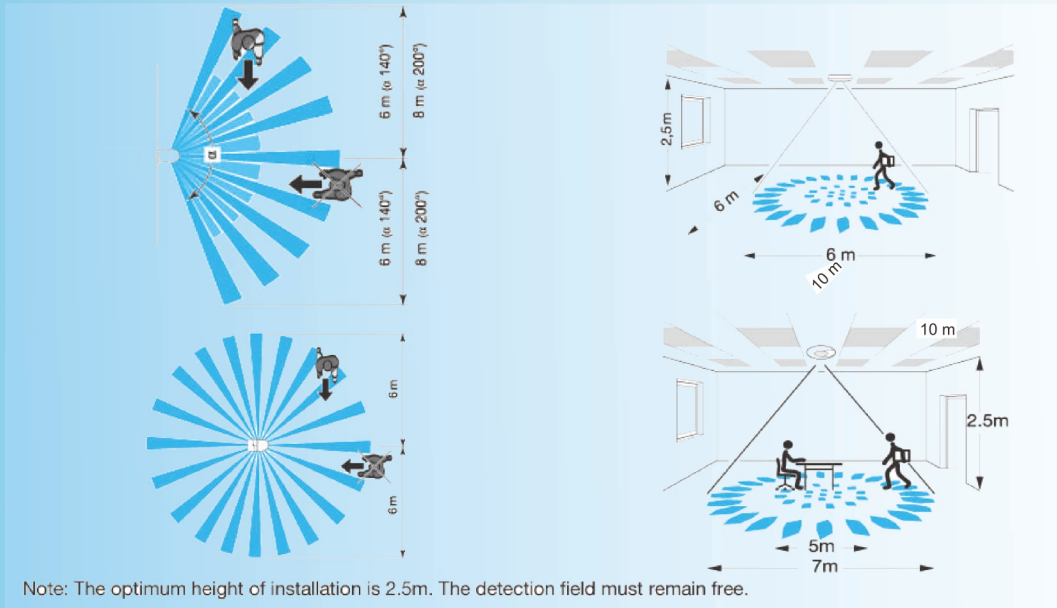


SLL1256FJ

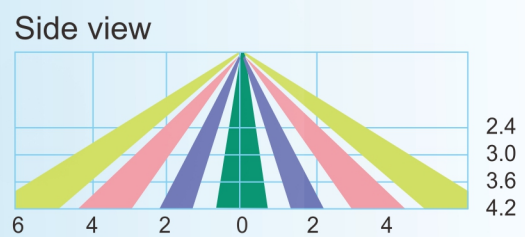
SPECIFACATION SLL1256FJ

Material:PC(UV proof)
Detection Range:180°/360°
Power Source: 220-240V/AC Power Frequency: 50Hz
HF System:5.8GHz CW radar,ISM band
Transmission Power:<0.2mW
Rated Load:Max.600W
Detection Range:10%,50%,75%,100%(choice)
Detection Distance: wall:2-15m(adjustable)
ceiling:1-8m(radius), adjustable
Hold Time:5s,30s,1min,5min,10min,20min,30min(choice)
Stand-by Period:10s,1min,5min,10min,20min,30min(choice)
Stand-by dimming Level:10%,20%,30%,50%(choice)
Ambient Light :2lux,10lux,50lux,2000lux(choice)
Installation Height:wall: 1.5-3.5m ,ceiling:2-8m
Power Consumption:approx.0.9W

Wall & Ceiling Mount Sensor Detection range

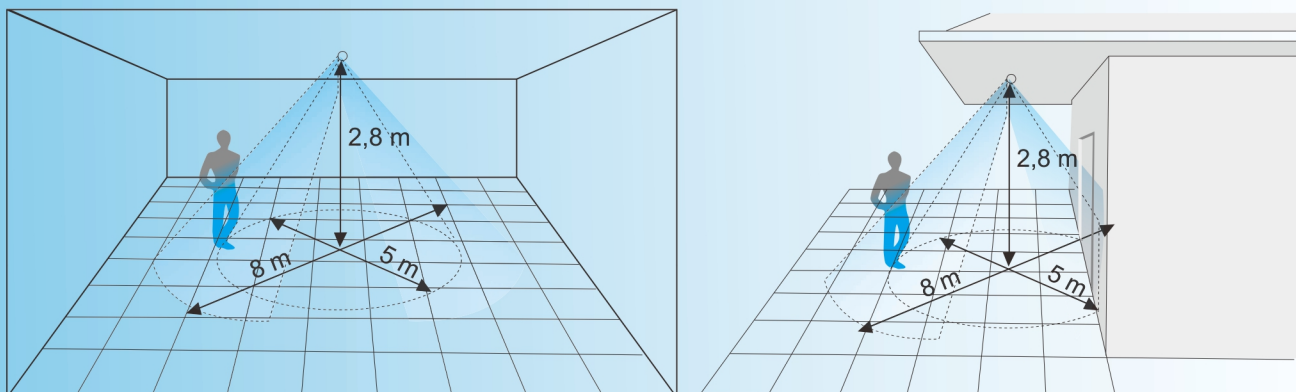


Mount height	2.4m	3.0m	3.6m	4.2m
Coverage(Dia)	6.0m	7.5m	9.0m	10.5m



■ PIR 1 - Top Lens
■ PIR 2 - Bottom Lens

Ceiling Mounting





SLL 1436

SPECIFACATION SLL1436

Material:PC(UV proof)
Power source:220V/AC~240V/AC
100V/AC~130V/AC
Power frequency:50/60Hz
Rated load:3000W Max.tungsten(220-240V/AC)
300W Max.fluorescent(220-240V/AC)
1200W Max.tungsten(100-130V/AC)
150W Max.fluorescent(100-130V/AC)
Detection distance:15m max(<24°C)(adjustable)
Detection angle:120°
Time-delay:Min: 10sec(approximately)
Max:6min~9min
Light-control:<15LUX~daylight (adjustable)
Working temperature:-10~+40°C
Relative humidity:<93%RH
Installation height:1.5m~3.5m
Power consumption:0.45W(working) 0.1W(static)
Detection moving speed:0.6~1.5m/s



SLL 1438 FJ

SPECIFACATION SLL138FJ

Material:PC(UV proof)
Power source:220V/AC~240V/AC
100V/AC~130V/AC
Power frequency:50/60Hz
Rated load:2000W Max.tungsten(220-240V/AC)
200W Max.fluorescent(220-240V/AC)
1200W Max.tungsten(100-130V/AC)
150W Max.fluorescent(100-130V/AC)
Detection distance:18 ~ 20m
Detection angle:120° / 180° / 360°
Time-delay:Min: 10sec ~ 30min
Light-control:<15LUX~daylight (adjustable)
Working temperature:-10~+40°C
Relative humidity:<93%RH
Installation height:1.5m~3.5m
Power consumption:0.45W(working) 0.1W(static)
Detection moving speed:0.6~1.5m/s



SLL 2348

SPECIFACATION SLL2348

Power source:220V/AC~240V/AC
Power frequency:50/60Hz
Rated load1200W Max.tungsten(220-240V/AC)
300W Max.fluorescent(220-240V/AC)
Detection distance:10m max
Detection angle:180° / 270°
Time-delay:Min: 8sec ~ 10min
Light-control:<15LUX~daylight (adjustable)
Working temperature:-10~+40°C
Relative humidity:<93%RH
Installation height:1.5m~2.5m
Power consumption:0.45W(working) 0.1W(static)
Detection moving speed:0.6~1.5m/s



SLL 19288A

SPECIFACATION SLL 19288A
 Material:PC(UV proof)
 Detection Range: 180°/270°
 Power Source: 110-130V/AC 220-240V/AC
 Power Frequency: 50/60Hz
 Rated Load:Max.800W (110-130V/AC)
 1200W (220-240V/AC)(incandescent lamp)
 300W(220-240V/AC)(energy-saving lamp)
 Detection Distance:max.12m(<24°C)
 Time Delay:10sec± 3sec to 15min±2min(adjustable)
 Ambient Light: <3-2000LUX(adjustable)
 Detection Motion Speed: 0.6-1.5m/s
 Installation Height: 1.8-2.5m



SLL 2574

SPECIFACATION SLL 19288A
 Material:PC(UV proof)
 Detection Range: 120° / 180°
 Power Source: 110-130V/AC 220-240V/AC
 Power Frequency: 50/60Hz
 Rated Load:Max.800W (110-130V/AC)
 1200W (220-240V/AC)(incandescent lamp)
 300W(220-240V/AC)(energy-saving lamp)
 Detection Distance:max.12m(<24°C)
 Time Delay:10sec± 3sec to 7min±2min(adjustable)
 Ambient Light: <3-2000LUX(adjustable)
 Detection Motion Speed: 0.6-1.5m/s
 Installation Height: 1.8-2.5m



SLL 19289A

SPECIFACATION SLL 19289A
 Detection Range: 160°
 Power Source:220-240V/AC
 Power Frequency: 50Hz
 Rated Load: Two wire line 0W-500W(incandescent lamp)
 5W-200W(energy-saving lamp)
 three wire line 0W-500W(incandescent lamp)
 0W-200W(energy-saving lamp)
 Detection Distance:Max..9m(<24°C))
 Time Delay:10sec±3sec to 7min±2min(adjustable)
 Ambient Light :< 3-2000LUX (adjustable)
 Installation Height:1-1.8m



SLL 19118A

SPECIFACATION SLL 19118A
 Material:PC(UV proof)
 Power source:220V/AC~240V/AC
 Power frequency:50/60Hz
 Rated load1200W Max.tungsten(220-240V/AC)

 Detection distance:8m max
 Detection angle:120°
 Time-delay:Min: 8sec ~ 7min
 Light-control:<15LUX~daylight (adjustable)
 Working temperature:-10~+40°C
 Relative humidity:<93%RH
 Installation height:1.5m~2.5m
 Power consumption:0.45W(working) 0.1W(static)
 Detection moving speed:0.6~1.5m/s



SLL 19129A

SPECIFACATION SLL 19129A
 Material:PC(UV proof)
 Detection Range: 180°
 Power Source: 110-130V/AC 220-240V/AC
 Power Frequency: 50/60Hz
 Rated Load:Max.500W (110-130V/AC)/800W (220-240V/AC)
 (incandescent lamp)
 200W(110-130V/AC)/400W(220-240V/AC)
 (energy-saving lamp)
 Detection Distance:max.12m(<24°C)
 Time Delay:10sec± 3sec to 15min±2min(adjustable)
 Ambient Light: <3-2000LUX(adjustable)
 Detection Motion Speed: 0.6-1.5m/s



SLL 24

SPECIFACATION SLL 24
 Material:PC(UV proof)
 Customize Sensor
 Power Source: 220~240V/AC 100~130V/AC
 Power Frequency:50Hz/60Hz
 Rated load:800W Max.tungsten(220-240V/AC)
 200W Max.fluorescent(220-240V/AC)
 400W Max.tungsten (100-130V/AC)
 100W Max.fluorescent(100-130V/AC)
 Time setting: 5s, 30s, 1Min, 3 Min, 5 Min, 8 Min
 Light-control: <10LUX~2000LUX(adjustable)
 Detection range: 8m (22°C) (adjustable)
 Detection angle: 100°
 Working temperature: -10~+40°C
 Working humidity: ≤93%RH

Ceiling Mount Sensor



Photocell Switches



SLL 07 LC

SPECIFACATION SLL 07 LC
Material:PC(UV proof)
Power Source:110-240VAC
Power Frequency: 50/60Hz
Rated Current: 10A
Ambient Light :<5-15LUX
IP44



SLL 08 LC

SPECIFACATION SLL 08LC
Material:PC(UV proof)
Power Source: 110-130VAC 220-240VAC
Power Frequency: 50/60Hz
Rated Current: 25A
Ambient Light:< 5-50LUX (adjustable)
IP44



SLL 09F LC

SPECIFACATION SLL 09F LC
Material:PC(UV proof)
Power Source:220-240VAC
Power Frequency: 50Hz
Rated Current: 15A
Ambient Light :< 2-100LUX (adjustable)
IP65



SLL 10FLC

SPECIFACATION SLL 792 LC
Material:PC(UV proof)
Power Source: 220-240VAC
Power Frequency: 50Hz
Rated Current: 20A
Ambient Light : <2-100LUX (adjustable)
IP65



NOTES

A series of horizontal dashed lines for writing notes.



Multitasking Corporation LTD
Multitasking Electronic LTD.
647, Yeogsam-Dong, Gangnam-gu, Seoul,
Korea Email: Info@senslights.com
www.senslights.com

220-1821 Wellington Ave, ~Winnipeg, MB R3H
0G4, Canada Email: sales@senslights.com
P.O.Box:122815,Sharjah, Dubai
U.A.E. Email: sales@senslights.com

Rm. 19C, Lockhart Ctr, 301-307
Lockhart Rd, Wan Chai, Hong Kong.
Email: hk@senslights.com

Dukdalfweg 51~NL – 1042
BC AMSTERDAM
Email: sales@senslights.com

GPO Box 4967~Melbourne Victoria
3001~Australia
Email: sales@senslights.com

G489 S. Robertson Blvd, Suite #204
Beverly Hills, CA 90211 - USA
Email: sales@senslights.com

73, avenue Daumesnil
75012 Paris - FRANCE
Email: sales@senslights.com



Authorised Distributor / Dealer

www.senslights.com
www.multitaskelectronics.com
www.multitaskingcorporation.com

